

## VISION 2020 UK: Funders of Eye Research Summit

# MRC approaches to funding

Emily Gale  
Medical Research Council

23 September 2015

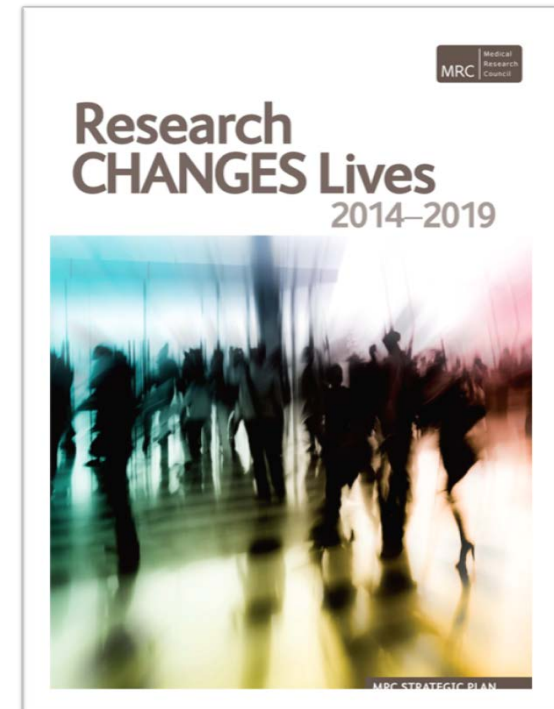
# MRC strategy

---

## Research Changes Lives 2014-2019

Strategic intent: to support excellent discovery science and partnerships to promote translation to accelerate the pace of improvements in health and wealth.

- Strategic Aim One: **Picking research that delivers**  
*Setting research priorities which are most likely to deliver improved health outcomes*
- Strategic Aim Two: **Research to people**  
*Bringing the benefits of excellent research to all sections of society*
- Strategic Aim Three: **Going global**  
*Accelerating progress in international health research*
- Strategic Aim Four: **Supporting scientists**  
*Sustaining a robust and flourishing environment for world-class research*



# Our emerging strategic interests

---

- Enable a more productive research base
- Lead the UK response to major world-wide health challenges
- Breakthroughs in complex diseases from human studies
- Informatics and computation at the heart of modern interdisciplinary medical research
- Promote innovative, discovery science and high-risk, high-gain basic research
- Encourage interdisciplinary science
- Accelerate translation and economic growth through creative working across academia and industry

# MRC remit and partners

---

- **MRC: basic research to early clinical trials**

- Underpinning and aetiological
- Prevention
- Detection and diagnosis
- Treatment development & evaluation
- Phase 1 & 2 trials

- **Other funders/partners**

- Government departments, especially Health
- Other Research Councils
- Medical Charities
- Industry
- Technology Strategy Board



MRC

BBSRC

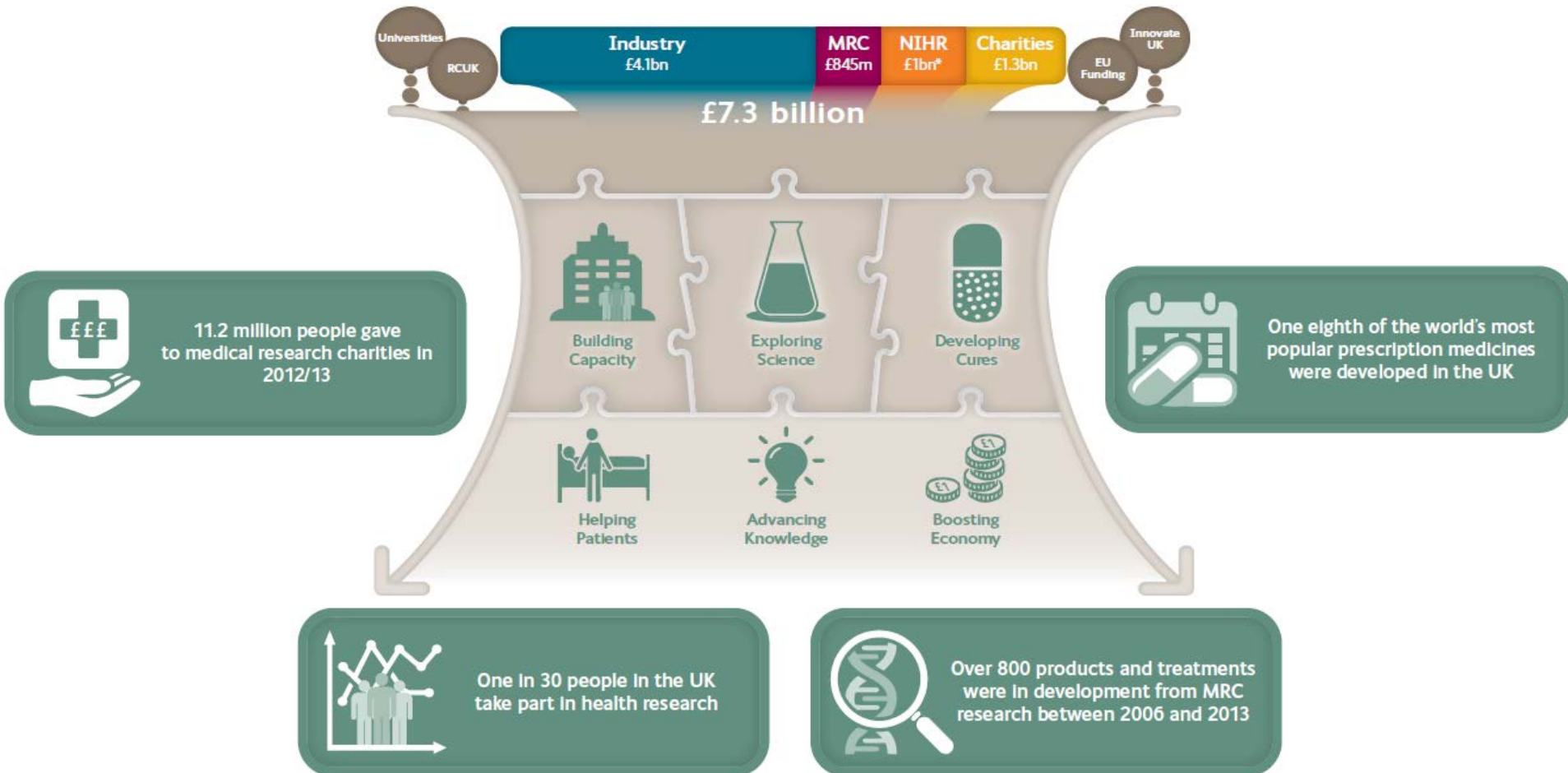
NIHR

Medical Charities

TSB

# MRC partnerships: Working together to support medical research

OSCHR



\* Total annual funding including devolved nations' funding, Innovate UK, EU funding, etc. likely to be in excess of £8bn.

# MRC Funding Schemes

---

- **Research programme and partnership grants**
  - Reviewed through the MRC Boards or Panels
    - Neuroscience and mental health
    - Population and systems medicine
    - Molecular and cellular medicine
    - Infections and immunity
    - Developmental pathway funding scheme (translational research)
- **Strategic initiatives**
  - Regenerative medicine and stem cells, AMR, UKDP, Informatics, and others
- **Skills development and training**
  - » Fellowships and studentships

# Funding culture and values

---

- **Peer review participation** imperative – commitment to clear principles, processes and expectations
- Shared responsibility to underpin **research quality and reproducibility** through rigorous experimental design and statistical expertise
- Understanding the keys to being **competitive**
- Actively promoting **equality and diversity** in medical research

# MRC eye and vision portfolio

## 2011-2015

---

MRC spend on Eye Disease & Disorders of Vision

	2011/12	2012/13	2013/14	2014/15
Fellowship	£685,165	£1,125,347	£1,413,501	£1,338,041
Research Grant	£4,224,191	£4,638,164	£3,957,167	£4,970,890
P&C	£0	£0	£233,280	£116,640
Unit	£3,286,595	£2,987,184	£2,138,526	£1,319,760
University Unit	£657,691	£1,155,868	£1,431,000	£1,105,000
	<b>£8,853,642</b>	<b>£9,906,563</b>	<b>£9,173,474</b>	<b>£8,850,331</b>



# MRC spend in various disease areas

---

MRC portfolio comparison over the last 5 years

	5 year Average
Mental Health & Addiction	£25,901,248
Dementia	£21,837,845
Rheumatology	£15,507,626
Parkinson's Disease	£10,340,245
Eye Disease & Disorders of Vision	<b>£9,657,637</b>
Alzheimer Disease	£9,511,572
Autism	£2,668,635

# Happy to take questions

Contact details:

[emily.gale@headoffice.mrc.ac.uk](mailto:emily.gale@headoffice.mrc.ac.uk)

# Sources of advice ...

---

- **Funder**
  - Website, helpline
  - Named contact
- **University Grants office**
  - University requirements
  - Costing software
  - Assistance in preparing grant applications
    - Writing workshops
    - Helpdesk
- **Experienced colleagues and collaborators**
  - Past evaluation committee members
  - Successful grant applicants



# Elements of successful proposals

---

- A clear rationale for the research
  - Background
  - Hypothesis
  - Aims
- Preliminary data
- Methodology
  - Plan B (risks are inevitable)
  - People, environment, training for fellowships
  - Resources well justified
  - Write clearly for non-experts

